

<div>archadeck®</div> <div>outdoor living</div>				<div>HENDERSON ENTERPRISES, LLC</div> <div>d.b.a. Archadeck of Nashville</div>				<div>ALL CONSTRUCTION PLANS ARE PROVIDED AS IS. ARCHADECK FRANCHISING CORPORATION DISCLAIMS ALL OTHER WARRANTIES, EXPRESS OR IMPLIED, INCLUDING MERCHANTABILITY OR FITNESS OF PURPOSE. ARCHADECK FRANCHISING CORPORATION IS NOT LIABLE FOR INCIDENTAL, SPECIAL, CONSEQUENTIAL, OR INDIRECT DAMAGES OF ANY KIND, INCLUDING, BUT NOT LIMITED TO, LOSS OF ANTICIPATED PROFITS, BUSINESS OPPORTUNITY OR OTHER ECONOMIC LOSS ARISING OUT OF THE USE OF SERVICES OR ANY CONSTRUCTION PLANS RECEIVED FROM ARCHADECK FRANCHISING CORPORATION, EVEN IF ARCHADECK FRANCHISING CORPORATION HAS BEEN ADVISED OF THE POSSIBILITY OF SUCH DAMAGE. IT IS THE BUILDER'S RESPONSIBILITY TO ENSURE THE ACCURACY, COMPLIANCE WITH APPLICABLE STATUTE(S) OR REGULATION(S), AND FITNESS OF PURPOSE OF ANY PLANS OR CONSTRUCTION INFORMATION RECEIVED FROM ARCHADECK FRANCHISING CORPORATION PRIOR TO THE USE THEREOF.</div> <div>ARCHADECK FRANCHISING CORPORATION IS NOT ENGAGED IN RENDERING PROFESSIONAL SERVICES OR ADVICE. USE OF ANY CONSTRUCTION INFORMATION PROVIDED BY ARCHADECK FRANCHISING CORPORATION IS SUBJECT TO THE ADDITIONAL DISCLAIMERS AND CAVEATS THAT MAY APPEAR THROUGHOUT THE CONSTRUCTION PLANS, CONTRACTS AND OTHER DOCUMENTS PROVIDED TO THE BUILDER AND CUSTOMER.</div>							
DESIGN LOAD CRITERIA								<div>TROMBLEY</div> <div>156-097577</div> <div>3380 HOBSON PIKE</div> <div>HERMITAGE, TN., 37076</div>							
FOOTING/FOUNDATION LOADS				P.S.F.	CEILING										
LIVE LOAD				40	WITH STORAGE (L/240)				20	<div>T.O.D. TAG</div> <div><div>XX"</div><div>ELEVATION AT POINT OF TAG</div></div>					
DEAD LOAD				10	WITHOUT STORAGE (L/240)				10					<div>DETAIL TAG</div> <div><div>DETAIL NUMBER</div><div><div>#</div><div>#</div></div><div>SHEET</div><div>AREA OF DETAIL</div></div>	
TOTAL DESIGN LOAD				50	WITH STORAGE (L/360)				20	<div>STAIR TAG</div> <div><div># DN</div><div></div></div>					
DECK LOADS (L/240)				P.S.F.	WITHOUT STORAGE (L/360)				10					<div>SECTION TAG</div> <div><div>SECTION CUT PLANE</div><div><div>#</div><div>#</div></div><div>DIRECTION OF VIEW</div></div>	
(DECK FRAMING)					DEAD LOAD				10	<div>- 4 x 4 DECK COLUMN</div> <div>- 4 x 6 DECK COLUMN</div> <div>- 6 x 6 DECK COLUMN</div>					
FRAMING DESIGN LIVE LOAD				60	ROOF LOADS (L/240)				P.S.F.					<div>- RAIL POST</div> <div>- X BRACING</div>	
FRAMING DESIGN DEAD LOAD				10	SNOW LOAD				20	<div><input checked="" type="checkbox"/> - FENCE POST</div> <div>- PARTING BOARD LOCATION AND CENTER LINE</div>					
TOTAL FRAMING DESIGN LOAD				70	TOTAL DESIGN LOAD				30	<div><input checked="" type="checkbox"/> - ROOF POST/ PERGOLA POST</div> <div>- STUD LOCATION</div>					
FLOOR LOADS (L/360)				P.S.F.	LIVE LOAD				10					<div>FOR ANY QUESTIONS OR CONCERNS PLEASE CONTACT: HENDERSON ENTERPRISES, LLC 1919 Appomattox Drive Lebanon, TN 37087 PHONE: (615)-547-2333</div>	
LIVE LOAD (LIVING)				40	DEAD LOAD				5	<div>ENGINEER OF RECORD (AS APPLICABLE)</div>					
LIVE LOAD (SLEEPING)				30	TOTAL DESIGN LOAD				15						
DEAD LOAD				10	**ASSUMED OPEN FRAMED PERGOLA, NOT DESIGNED FOR SNOW LOADS**										
SPA LOADS (L/240)				P.S.F.	TOTAL DESIGN LOAD				110						
LIVE LOAD				100											
DEAD LOAD				10											
TOTAL DESIGN LOAD															
ASSUMED SPA LOADING, VERIFY w/ SPA MANUFACTURER															
DESIGN CRITERIA:								NOTES:							
<ul style="list-style-type: none">- THIS PROJECT HAS BEEN DESIGNED FOLLOWING THE REGULATIONS OF THE 2012 IRC (INTERNATIONAL RESIDENTIAL CODE).- WORK TO MEET LOCAL, STATE AND APPLICABLE RULES AND REGULATIONS.- IN-GRADE DESIGN VALUES BASED ON AF&PA.- PROVIDE JOIST HANGERS @ ALL FLUSH FRAME CONDITIONS.- PRESUMPTIVE SAFE SOIL BEARING CAPACITY IS 2000 PSF.- FROST LINE 12".- CONNECTIONS TO EXISTING STRUCTURE FLASHED PER LOCAL CODE								<div>LUMBER:</div> <ul style="list-style-type: none">- ALL FRAMING LUMBER TO BE #2 S.P. (SOUTHERN PINE) OR BETTER, TREATED FOR EXTERIOR USE, PER LOCAL CODE U.N.O.- ALL PSL ENGINEERED TYPE LUMBER TO BE TREATED FOR EXTERIOR USE: P.S.L. STRESS CLASS (2.0E, 2900Fb) P.S.I.- ALL GLULAM ENGINEERED TYPE LUMBER TO BE TREATED FOR EXTERIOR USE: GLULAM STRESS CLASS (1.9E, 2600Fb) P.S.I.- ALL LVL/MICROLLAM ENGINEERED TYPE LUMBER TO BE INTERIOR USE ONLY: L.V.L. STRESS CLASS (1.8E, 2600Fb) P.S.I. <div>CONCRETE:</div> <ul style="list-style-type: none">- MINIMUM 28 DAY COMPRESSIVE STRENGTH = 2500 PSI.							
SHEET INDEX								ABBREVIATIONS:							
NOTE THAT NOT ALL JOBS REQUIRE ALL SHEETS								<div>#B - BEAM</div> <div>#BB - BAND BOARD</div> <div>#C - RAIL CAP LENGTH</div> <div>#CB - COLLAR BEAM</div> <div>#DB - DOUBLE BAND</div> <div>#DJ - DOUBLE JOIST</div> <div>#DR - DOUBLE RAFTER</div> <div>#F - FENCE CAP LENGTH</div> <div>#G - GIRDER</div> <div>#HB - HOUSE BAND</div> <div>#HBE - HOUSE BAND EXTENSION</div> <div>#KB - KING BEAM</div> <div>#QJ - QUAD JOIST</div> <div>#RB - RIDGE BEAM</div> <div>#RP - ROOF PLATE</div> <div>#TB - TRIPLE BAND</div> <div>#TJ - TRIPLE JOIST</div> <div>ALT. - ALTERNATE</div> <div>ALUM. - ALUMINUM</div> <div>APX. - APPROXIMATE</div> <div>BD. - BOARD</div> <div>C/L - CENTER LINE</div> <div>CJ - CEILING JOIST</div> <div>CLG. - CEILING</div> <div>C.M.U. - CONCRETE MASONRY UNIT</div> <div>CONC. - CONCRETE</div> <div>CONT. - CONTINUOUS</div> <div>DBL. - DOUBLE</div> <div>DIA. - DIAMETER</div> <div>DIM. - DIMENSION</div> <div>D.L. - DEAD LOAD</div> <div>DN. - DOWN</div> <div>DTL. - DETAIL</div> <div>ELEC. - ELECTRICAL</div> <div>ELEV. - ELEVATION (SEE T.O.D.)</div> <div>EQ. - EQUIVALENT</div> <div>EXT. - EXTERIOR</div> <div>FIN. - FINISH</div> <div>FLR. - FLOOR</div> <div>FND. - FOUNDATION</div> <div>FT. - FOOT/FEET</div> <div>F.V. - FOUNDATION VENT</div> <div>GLU. - GLULAM</div> <div>HDR. - HEADER</div> <div>INT. - INTERIOR</div> <div>IN. - INCH</div> <div>JST. - JOIST</div> <div>LB. - POUNDS</div> <div>L.L. - LIVE LOAD</div> <div>L.V.L. - LAMINATED VENEER LUMBER</div> <div>LOWR. - LOWER</div> <div>MANUF. - MANUFACTURER</div> <div>MAX. - MAXIMUM</div> <div>MIN. - MINIMUM</div> <div>MOD. - MODIFIED</div> <div>N.T.S. - NOT TO SCALE</div> <div>O.C. - ON CENTER</div> <div>OPT. - OPTIONAL</div> <div>O.S.B. - ORIENTED STRAND BOARD</div> <div>P.L. - POINT LOAD</div> <div>P.L.F. - POUNDS PER LINEAR FOOT</div> <div>P.S.F. - POUNDS PER SQUARE FOOT</div> <div>P.S.I. - POUNDS PER SQUARE INCH</div> <div>P.S.L. - PARALLEL STRAND LUMBER</div> <div>P.T. - PRESSURE TREATED</div> <div>P.T.T. - POUR TO TOP</div> <div>P.V.C. - POLY VINYL CHLORIDE</div> <div>RBD. - RIDGE BOARD</div> <div>REQD. - REQUIRED</div> <div>R.O. - ROUGH OPENING</div> <div>RSW - RIDGE SUPPORT WALL</div> <div>S.F. - SQUARE FOOT/FEET</div> <div>SQ. - SQUARE</div> <div>T&G - TONGUE & GROOVE</div> <div>T.L. - TOTAL LOAD</div> <div>T.O.D. - TOP OF DECK</div> <div>TYP. - TYPICAL</div> <div>UNFIN. - UNFINISHED</div> <div>U.N.O. - UNLESS NOTED OTHERWISE</div> <div>UPR. - UPPER</div> <div>W/ - WITH</div> <div>W/O - WITHOUT</div>							
ST - SITE								DRAWINGS PREPARED BY: ARCHADECK FRANCHISING CORPORATION							
PL-# - PLAN								CONSTRUCTION & DRAFTING DEPARTMENT							
EV-# - ELEVATION								2924 EMERYWOOD PARKWAY, SUITE 101							
FD-# - FOUNDATION/FOOTINGS								RICHMOND, VA 23294							
								© 2019 ARCHADECK FRANCHISING CORPORATION							
								UNAUTHORIZED DUPLICATION IS A VIOLATION OF ALL							
								APPLICABLE LAWS							

All dimensions are approximate. In the event of a difference between the drawn and written dimensions, the written dimension shall prevail. Due to local differences in building codes and regulations, and specific site conditions, these drawings may need to be modified by the builder to comply with such local codes and regulations, or site conditions.

GENERAL DECK NOTES

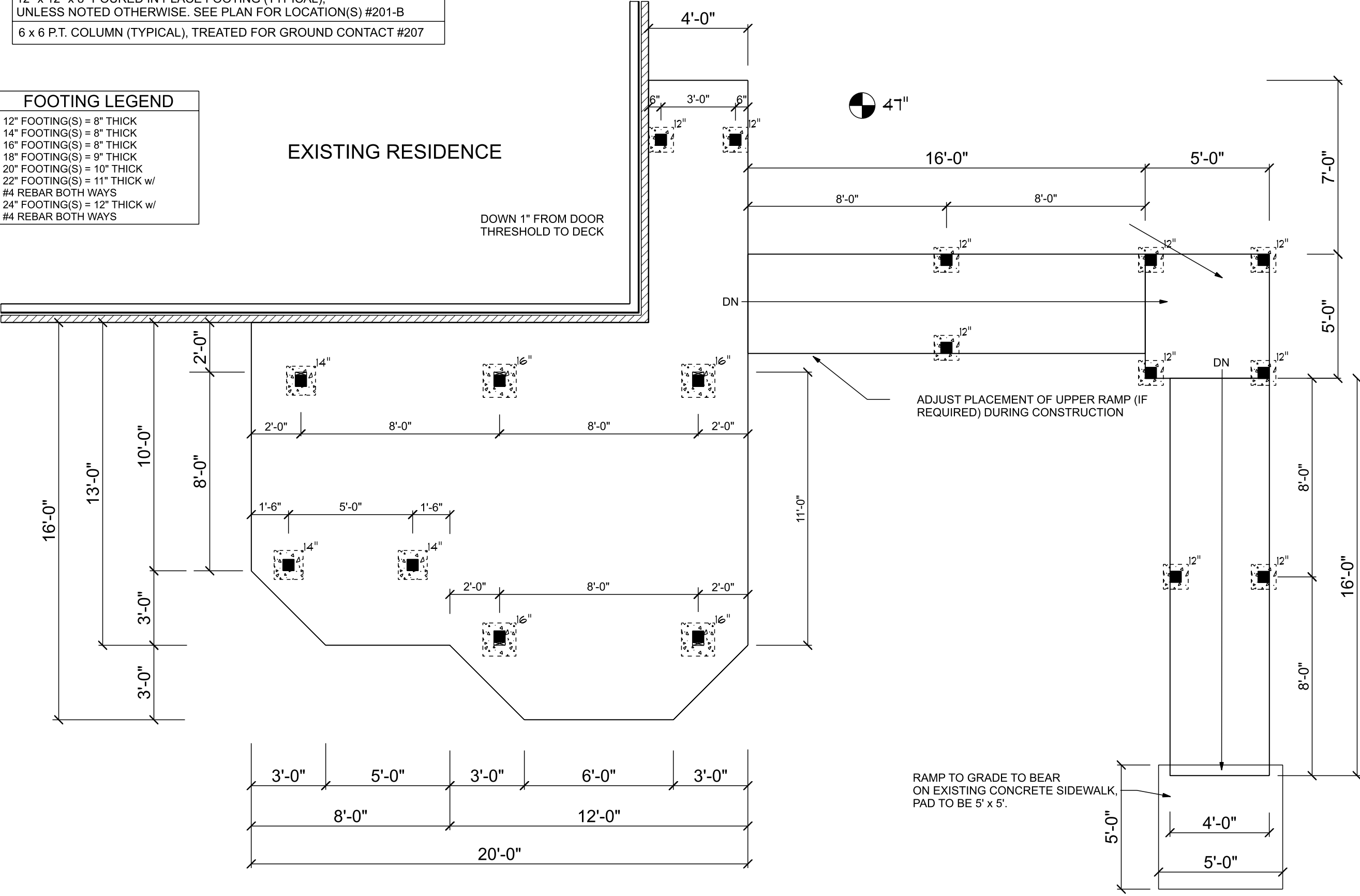
12" x 12" x 8" POURED IN PLACE FOOTING (TYPICAL),
UNLESS NOTED OTHERWISE. SEE PLAN FOR LOCATION(S) #201-B
6 x 6 P.T. COLUMN (TYPICAL), TREATED FOR GROUND CONTACT #207

FOOTING LEGEND

12" FOOTING(S) = 8" THICK
14" FOOTING(S) = 8" THICK
16" FOOTING(S) = 8" THICK
18" FOOTING(S) = 9" THICK
20" FOOTING(S) = 10" THICK
22" FOOTING(S) = 11" THICK w/
#4 REBAR BOTH WAYS
24" FOOTING(S) = 12" THICK w/
#4 REBAR BOTH WAYS

EXISTING RESIDENCE

DOWN 1" FROM DOOR
THRESHOLD TO DECK



archadeck®
outdoor living
of
Nashville

SHEET DESCRIPTION

SHEET:

2/4

FD-1

SCALE: 1/4" = 1'-0"

Prepared by:
Archadeck Franchising Corporation
2924 Emerywood Parkway
Suite 101
Richmond, VA 23294

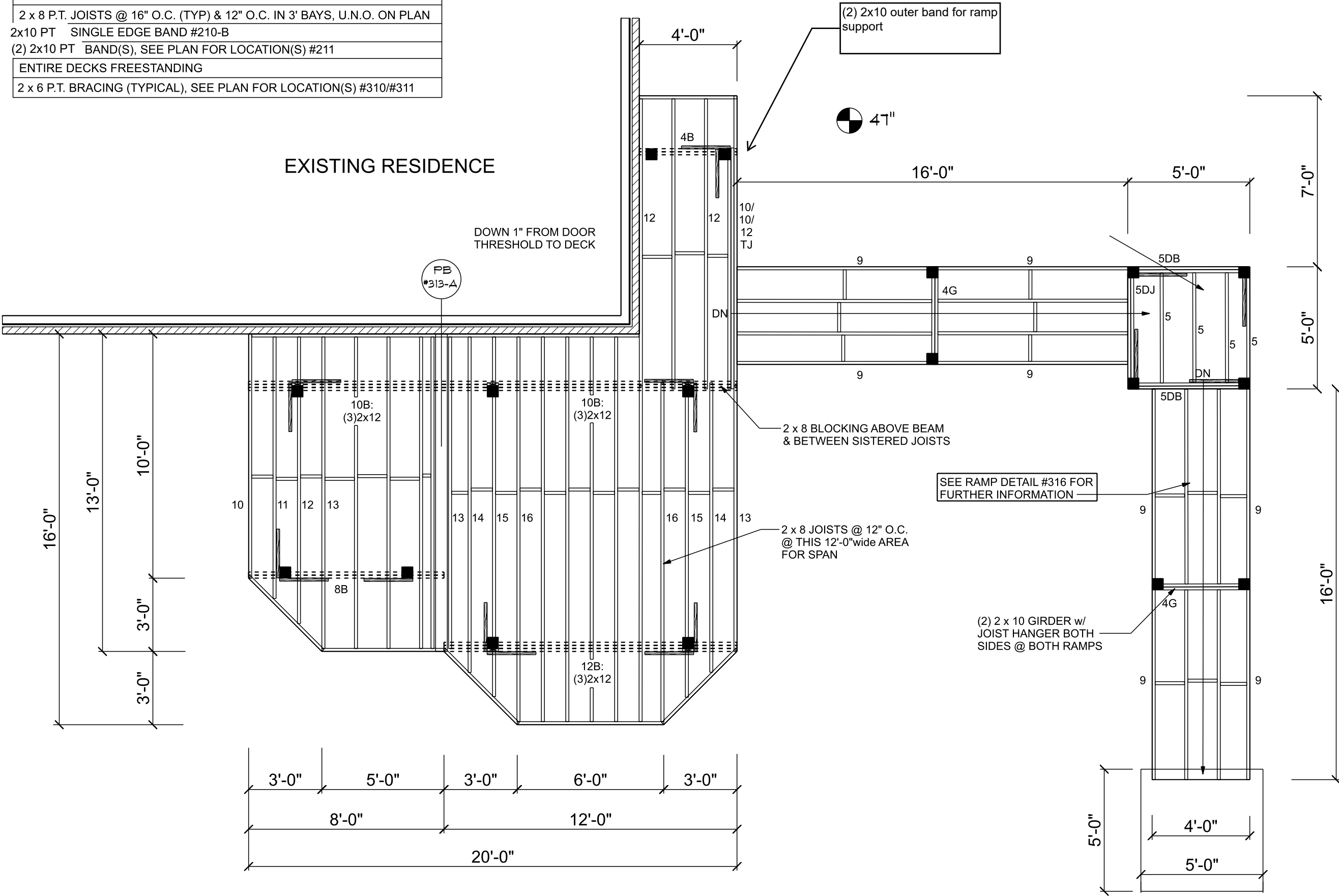
Construction & Drafting Department
©2017 Archadeck Franchising Corporation
All rights reserved. Unauthorized
duplication is a violation of
all applicable laws.

156-TROMBLEY-097577
3380 HOBSON PIKE
HERMITAGE, TN. 37076
DRAWN BY: TMG EXT: #233
JUNE 06, 2019

All dimensions are approximate. In the event of a difference between the drawn and written dimensions, the written dimension shall prevail. Due to local differences in building codes and regulations, and specific site conditions, these drawings may need to be modified by the builder to comply with such local codes and regulations, or site conditions.

GENERAL DECK NOTES

- (2) 2 x 10 P.T. BEAM(S), U.N.O., SEE PLAN FOR LOCATION(S) #210-B
- 2 x 8 P.T. JOISTS @ 16" O.C. (TYP) & 12" O.C. IN 3' BAYS, U.N.O. ON PLAN
- 2x10 PT SINGLE EDGE BAND #210-B
- (2) 2x10 PT BAND(S), SEE PLAN FOR LOCATION(S) #211
- ENTIRE DECKS FREESTANDING
- 2 x 6 P.T. BRACING (TYPICAL), SEE PLAN FOR LOCATION(S) #310/#311



archadeck®
outdoor living
of
Nashville

SHEET DESCRIPTION

SHEET:

3/4

FF-1

SCALE: 1/4" = 1'-0"

Prepared by:
Archadeck Franchising Corporation
2924 Emerywood Parkway
Suite 101
Richmond, VA 23294

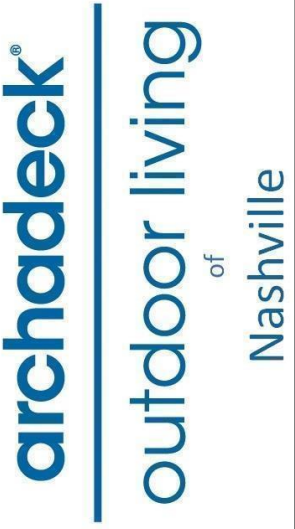
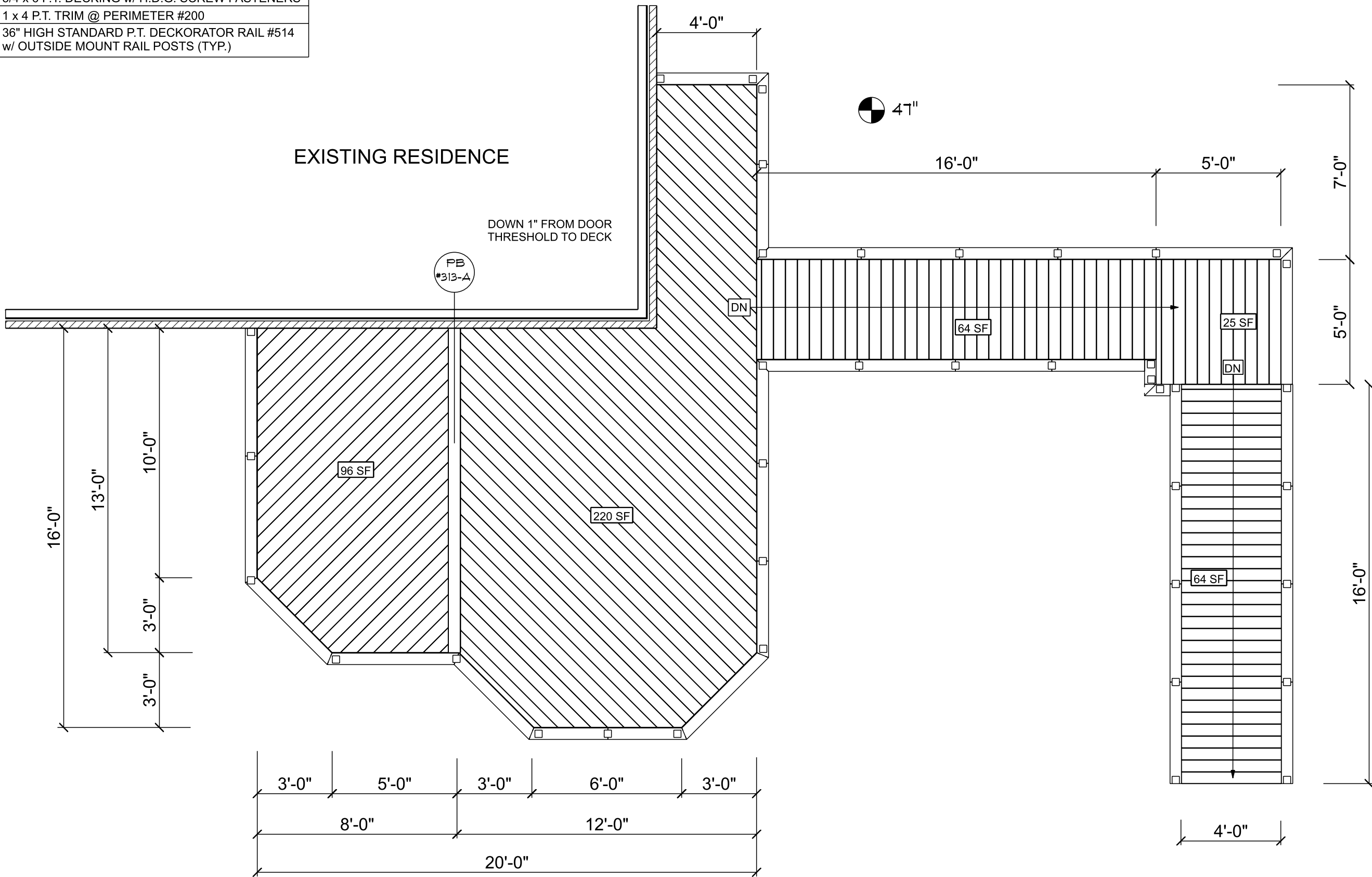
Construction & Drafting Department
©2017 Archadeck Franchising Corporation
All rights reserved. Unauthorized
duplication is a violation of
all applicable laws.

156-TROMBLEY-097577
3380 HOBSON PIKE
HERMITAGE, TN. 37076
DRAWN BY: TMG EXT: #233
JUNE 06, 2019

All dimensions are approximate. In the event of a difference between the drawn and written dimensions, the written dimension shall prevail. Due to local differences in building codes and regulations, and specific site conditions, these drawings may need to be modified by the builder to comply with such local codes and regulations, or site conditions.

GENERAL DECK NOTES

5/4 x 6 P.T. DECKING w/ H.D.G. SCREW FASTENERS
1 x 4 P.T. TRIM @ PERIMETER #200
36" HIGH STANDARD P.T. DECKORATOR RAIL #514
w/ OUTSIDE MOUNT RAIL POSTS (TYP.)



SHEET DESCRIPTION

SHEET:

4/4

FP-1

SCALE: 1/4" = 1'-0"

Prepared by:
Archadeck Franchising Corporation
2924 Emerywood Parkway
Suite 101
Richmond, VA 23294

Construction & Drafting Department
©2017 Archadeck Franchising Corporation
All rights reserved. Unauthorized
duplication is a violation of
all applicable laws.

156-TROMBLEY-097577
3380 HOBSON PIKE
HERMITAGE, TN. 37076
DRAWN BY: TMG EXT: #233
JUNE 06, 2019